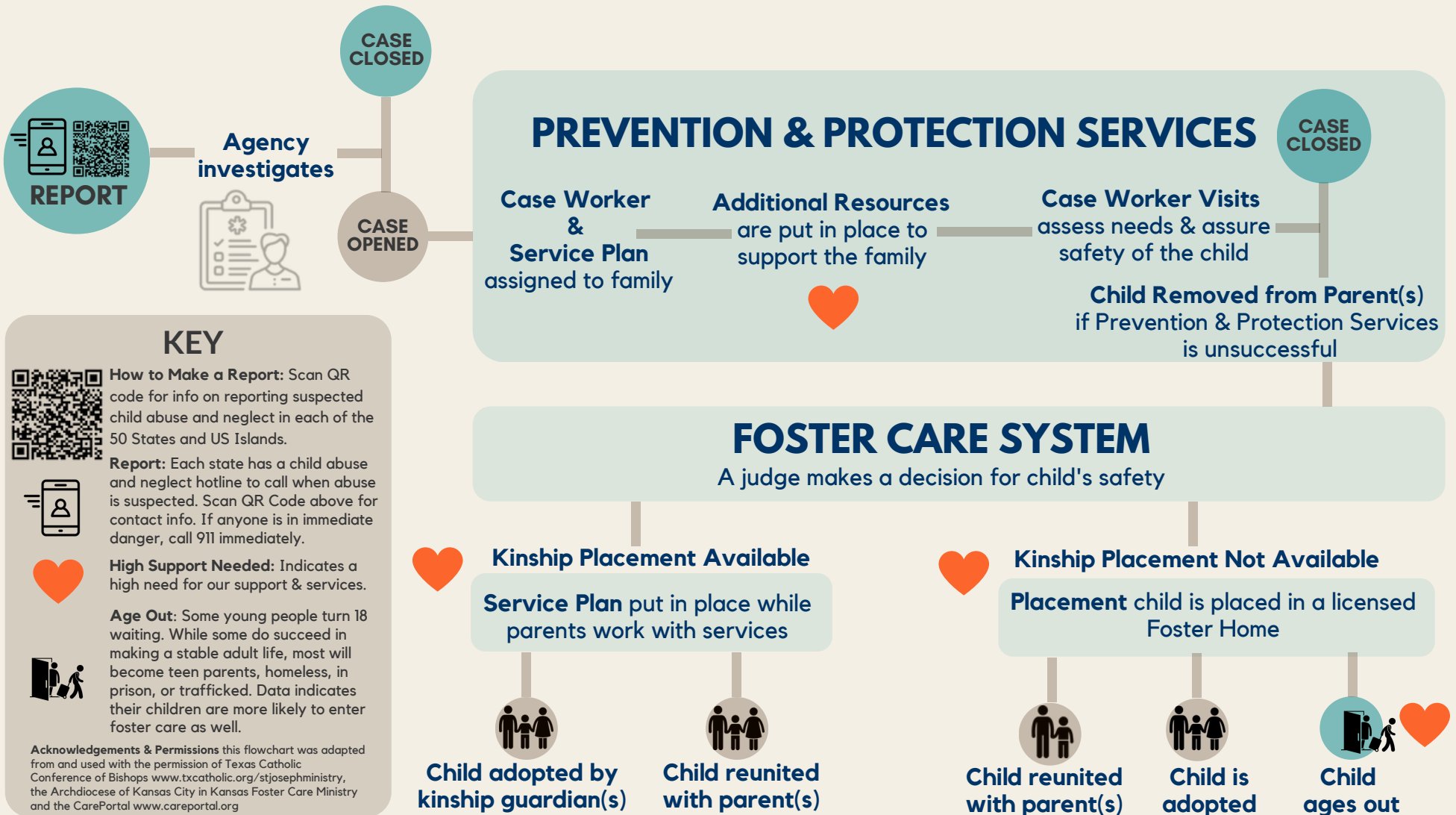


# UNDERSTANDING "THE FOSTER CARE SYSTEM"

[WWW.SPRINGSOFLove.ORG](http://WWW.SPRINGSOFLove.ORG)



### KEY



**How to Make a Report:** Scan QR code for info on reporting suspected child abuse and neglect in each of the 50 States and US Islands.



**Report:** Each state has a child abuse and neglect hotline to call when abuse is suspected. Scan QR Code above for contact info. If anyone is in immediate danger, call 911 immediately.



**High Support Needed:** Indicates a high need for our support & services.



**Age Out:** Some young people turn 18 waiting. While some do succeed in making a stable adult life, most will become teen parents, homeless, in prison, or trafficked. Data indicates their children are more likely to enter foster care as well.

**Acknowledgements & Permissions** this flowchart was adapted from and used with the permission of Texas Catholic Conference of Bishops [www.txcatholic.org/stjosephministry](http://www.txcatholic.org/stjosephministry), the Archdiocese of Kansas City in Kansas Foster Care Ministry and the CarePortal [www.careportal.org](http://www.careportal.org)